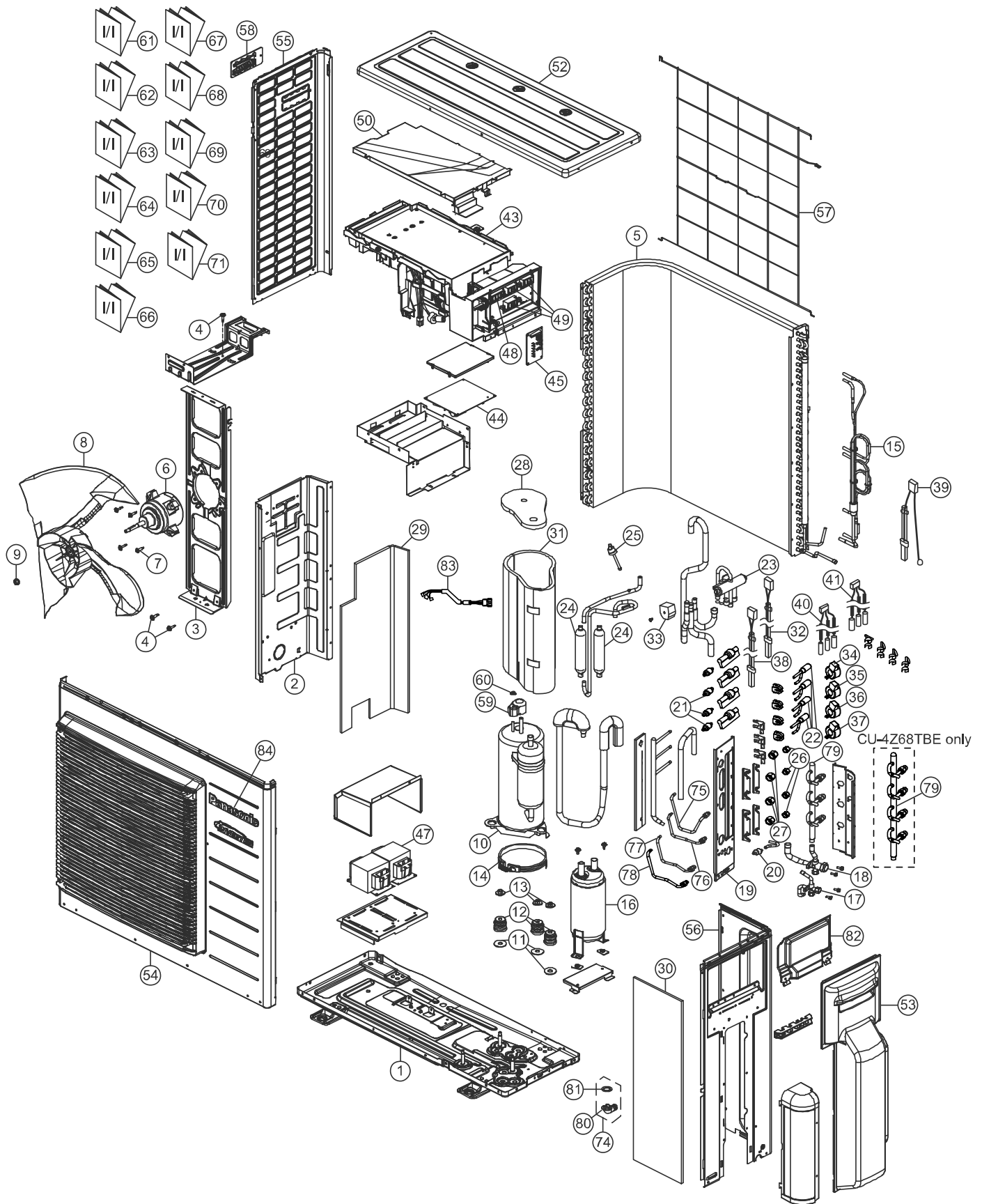


20. Exploded View and Replacement Parts List



Note
 The above exploded view is for the purpose of parts disassembly and replacement.
 The non-numbered parts are not kept as standard service parts.

SAFETY	NO.	DESCRIPTION & NAME	Q'TY	CU-3Z52TBE	CU-3Z68TBE	CU-4Z68TBE	REMARK
	1	CHASSIS ASSY	1	CWD52K1212	←	←	
	2	SOUND PROOF BOARD	1	CWH151194	←	←	
	3	FAN MOTOR BRACKET	1	CWD541127	←	←	
	4	SCREW-BRACKET FAN MOTOR	3	CWH551217	←	←	
	5	CONDENSER COMPLETE	1	CWB32C2680	←	ACXB32C08970	
⚠	6	FAN MOTOR, DC 60W 3PH	1	EHDS80C60AC	←	←	O
	7	SCREW-FAN MOTOR MOUNT	4	CWH551323	←	←	
	8	PROPELLER FAN ASSY	1	CWH00K1006	←	←	
	9	NUT	1	CWH561092	←	←	
⚠	10	COMPRESSOR	1	9KD184XAA21	←	←	O
	11	PACKING	3	CWB81043	←	←	
	12	BUSHING-COMPRESSOR MOUNT	3	CWH50055	←	←	
	13	NUT-COMPRESSOR MOUNT	3	CWH561049	←	←	
	14	CRANKCASE HEATER	1	CWA341047	←	←	
	15	TUBE ASSY (CAPILLARY TUBE)	1	CWT01C4955	←	←	
	16	ACCUMULATOR	1	CWB131050	←	←	
	17	3-WAY VALVE	1	CWB011601	←	←	O
	18	3-WAY VALVE	1	CWB011602	←	←	O
	19	HOLDER COUPLING	1	CWH351258	←	←	
	20	STRAINER	1	CWB11061	←	←	
	21	STRAINER	3/4	CWB111024	←	←	
	22	EXPANSION VALVE	3/4	CWB051029	←	←	O
	23	4-WAYS VALVE	1	CWB001026J	←	←	O
	24	DISCHARGE MUFFLER	2	ACXB12-00650	←	←	
	25	HEATING PRESSURE SWITCH	1	CWA101013	←	←	
	26	FLARE NUT (1/4)	3/4	CWT251030	←	←	
	27	FLARE NUT (3/8)	3/4	CWT251031	←	←	
	28	SOUND PROOF MATERIAL	1	CWG302246	←	←	
	29	SOUND PROOR MATERIAL	1	CWG302520	←	←	
	30	SOUND PROOR MATERIAL	1	CWG302521	←	←	
	31	SOUND PROOR MATERIAL	1	CWG302522	←	←	
	32	SENSOR COMPLETE - (CN-DIS)	1	CWA50C2515	←	←	O
⚠	33	V-COIL COMPLETE (4-WAY VALVE)	1	CWA43C2169J	←	←	O
⚠	34	V-COIL COMPLETE (E/VALVE-WHITE)	1	CWA43C2334	←	←	O
⚠	35	V-COIL COMPLETE (E/VALVE-YELLOW)	1	CWA43C2335	←	←	O
⚠	36	V-COIL COMPLETE (E/VALVE-BLUE)	1	CWA43C2336	←	←	O
	37	V-COIL COMPLETE (E/VALVE-RED)	1	-	-	CWA43C2338	O
	38	SENSOR-COMPLETE - DEF (CN-TH2)	1	CWA50C2625	←	←	O
	39	SENSOR-COMPLETE - OUTLET TEMP SENSOR	1	CWA50C2517	←	←	O
	40	SENSOR-COMPLETE (CN-TH4)	1	CWA50C2620	←	CWA50C2616	O
	41	SENSOR-COMPLETE (CN-TH3)	1	CWA50C2622	←	CWA50C2617	O
⚠	43	ELECTRONIC CONTROLLER	1	ACXA73C21000R	ACXA73C21010R	ACXA73C21020R	O
⚠	44	ELECT CONTROLLER – NOISE FILTER	1	ACXA73-07870	←	←	O
⚠	45	ELECT CONTROLLER (DISPLAY)	1	CWA745292	←	←	O
⚠	47	REACTOR	2	G0C403J00001	←	←	O
⚠	48	TERMINAL BOARD ASSY	1	CWA28K1195	←	←	O

SAFETY	NO.	DESCRIPTION & NAME	Q'TY	CU-3Z52TBE	CU-3Z68TBE	CU-4Z68TBE	REMARK
	49	TERMINAL BOARD ASSY	4	CWA28K1196	←	←	O
	50	CONTROL BOARD COVER	1	CWH131333	←	←	
	52	CABINET TOP PLATE	1	CWE031083A	←	←	
	53	CONTROL BOARD COVER	1	CWH13C1194	←	←	
	54	CABINET FRONT PLATE	1	CWE06K1065	←	←	
	55	CABINET SIDE PLATE	1	CWE041317A	←	←	
	56	CABINET SIDE PLATE	1	CWE041395A	←	←	
	57	WIRE NET	1	CWD041128A	←	←	
	58	HANDLE	1	CWE161010	←	←	
	59	TERMINAL COVER	1	CWH171035	←	←	
	60	NUT-TERMINAL COVER	1	CWH7080300J	←	←	
	61	INSTALLATION INSTRUCTION	1	ACXF60-06660	←	←	
	62	INSTALLATION INSTRUCTION	1	ACXF60-06670	←	←	
	63	INSTALLATION INSTRUCTION	1	ACXF60-06680	←	←	
	64	INSTALLATION INSTRUCTION	1	ACXF60-06690	←	←	
	65	INSTALLATION INSTRUCTION	1	ACXF60-06700	←	←	
	66	INSTALLATION INSTRUCTION	1	ACXF60-06710	←	←	
	67	INSTALLATION INSTRUCTION	1	ACXF60-06720	←	←	
	68	INSTALLATION INSTRUCTION	1	ACXF60-06730	←	←	
	69	INSTALLATION INSTRUCTION	1	ACXF60-06740	←	←	
	70	INSTALLATION INSTRUCTION	1	ACXF60-06750	←	←	
	71	INSTALLATION INSTRUCTION	1	ACXF60-06760	←	←	
	74	ACCESSORY CO. (DRAIN ELBOW)	1	CWG87C900	←	←	
	75	TUBE ASS'Y (LIQUID 1)	1	ACXT00-30740	←	←	
	76	TUBE ASS'Y (LIQUID 2)	1	ACXT00-30750	←	←	
	77	TUBE ASS'Y (LIQUID 3)	1	ACXT00-30760	←	←	
	78	TUBE ASS'Y (LIQUID 4)	1	-	-	ACXT00-30770	
	79	MANIFOLD TUBE ASS'Y (GAS)	1	CWT07K1480	←	CWT07K1476	
	80	FLEXIBLE PIPE (L-TUBE)	1	CWH5850080	←	←	
	81	PACKING-L.TUBE	1	CWB81012	←	←	
	82	CONTROL BOARD COVER-PLATE	1	CWH131364	←	←	
	83	LEAD WIRE-COMPRESSOR	1	CWA67C7213	←	←	
	84	PANASONIC BADGE	1	CWE373439	←	←	

(Note)

- All parts are supplied from PAPAMY, Malaysia (Vendor Code: 00029488).
- "O" marked parts are recommended to be kept in stock.